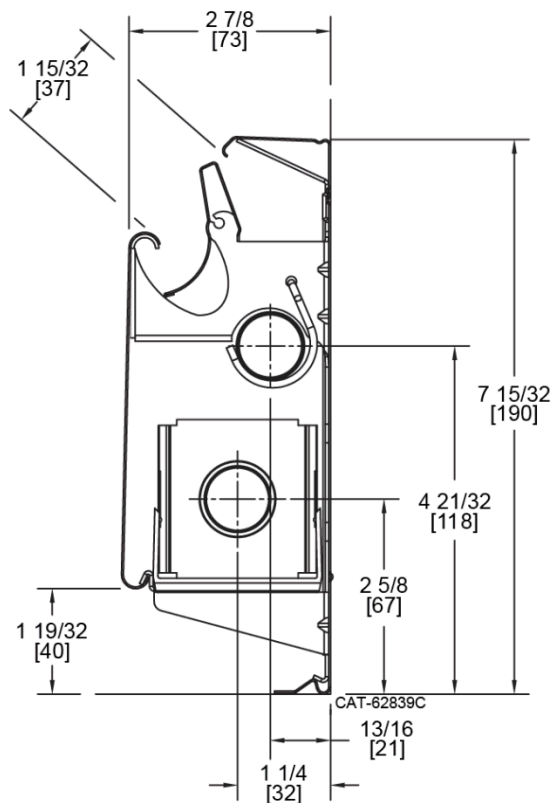


# Argo BASEBOARD

## Lo-Trim II Specifications

### Dimensions



DIMENSIONS IN "[ ]" ARE SHOWN  
IN MILLIMETERS.

### Ratings

Model	GPM	Average Hot Water Temperaure - BTU/HR./LIN. FT.								
		120°F	130°F	140°F	150°F	160°F	170°F	180°F	190°F	200°F
LT 1/2"	4	215	269	328	390	450	520	590	670	740
	1	204	255	311	370	430	490	560	630	700
LT 3/4"	4	209	262	319	380	440	510	570	630	710
	1	198	248	302	360	420	480	540	600	670

The use of Rating @ 4GPM is limited to installations where flow rate is known to be equal to or greater than 4 GPM. If flow rate is unknown, use 1 GPM rating.

Ratings include 15% addition to water heat capacity.

Hot water ratings shown are at the STANDARD WATER FLOW RATE of 500 lb/hr (1GPM) and 2,000 lbs/hr (4GPM) with 65° entering air temperature.

Friction loss through Argo Baseboard unit at 1 GPM (500 lbs/hr) is 47 MIL-INCHES per foot and at 4 GPM (2000 lbs/hr) is 525 MIL-INCHES PER FOOT.

Rating base on active length. Difference between active and total length is 3".

Aluminum fins are 2-1/8" x 2-1/8" x .008" thick, spaced 51 per foot (unpainted).

### Accessories



**End Caps**  
3" left or right end caps that extend to the floor.



**Inside Corners**  
available in 90° and 135° angles.



**Hinged Valve Enclosure**  
left or right 4" end caps extend to the floor.



**Outside Corners**  
available in 90° and 135° angles.



**3 Piece Splice**  
2" Joining piece set, 7" Filler piece set, 14" Filler piece set. Each set contains 3 pieces.



**Wall Ends**  
Wall ends available in 3".